

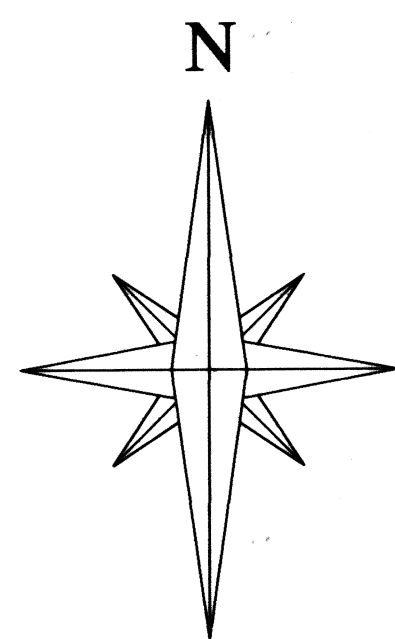
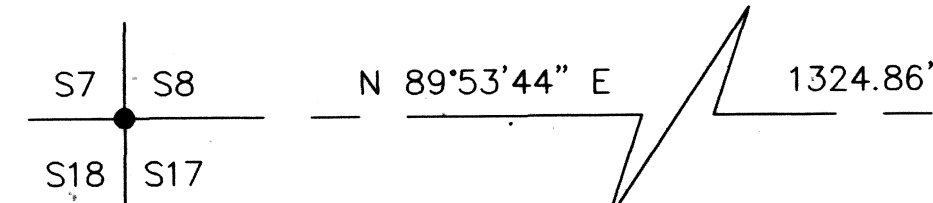
TRACT NO. 0134  
FINAL PLAT  
**WESTERN SKY AIRPARK**

Lots C1- C15, 1 - 8 & 163 - 168

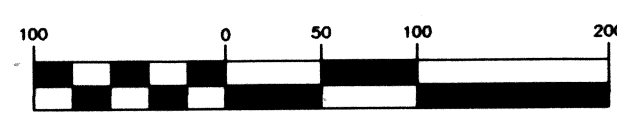
A PORTION OF  
NW 1/4 of SEC. 17, T. 5 N., R. 13 W.,  
Gila & Salt River Meridian,  
La Paz County, Arizona

LEGEND

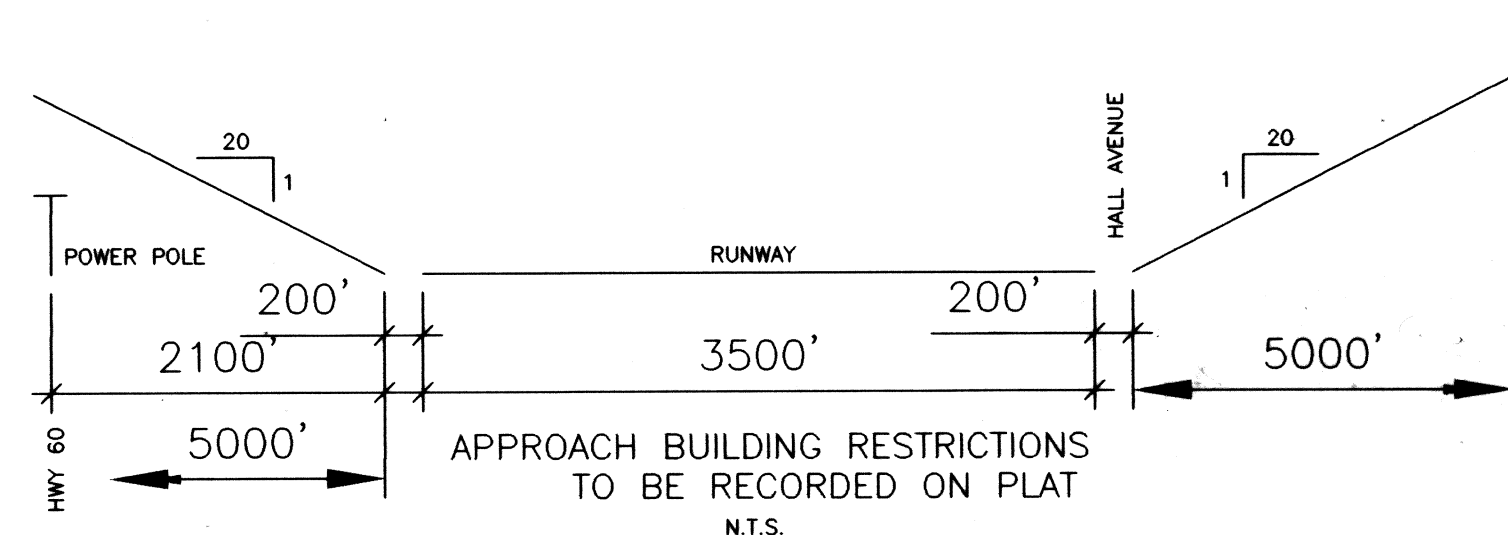
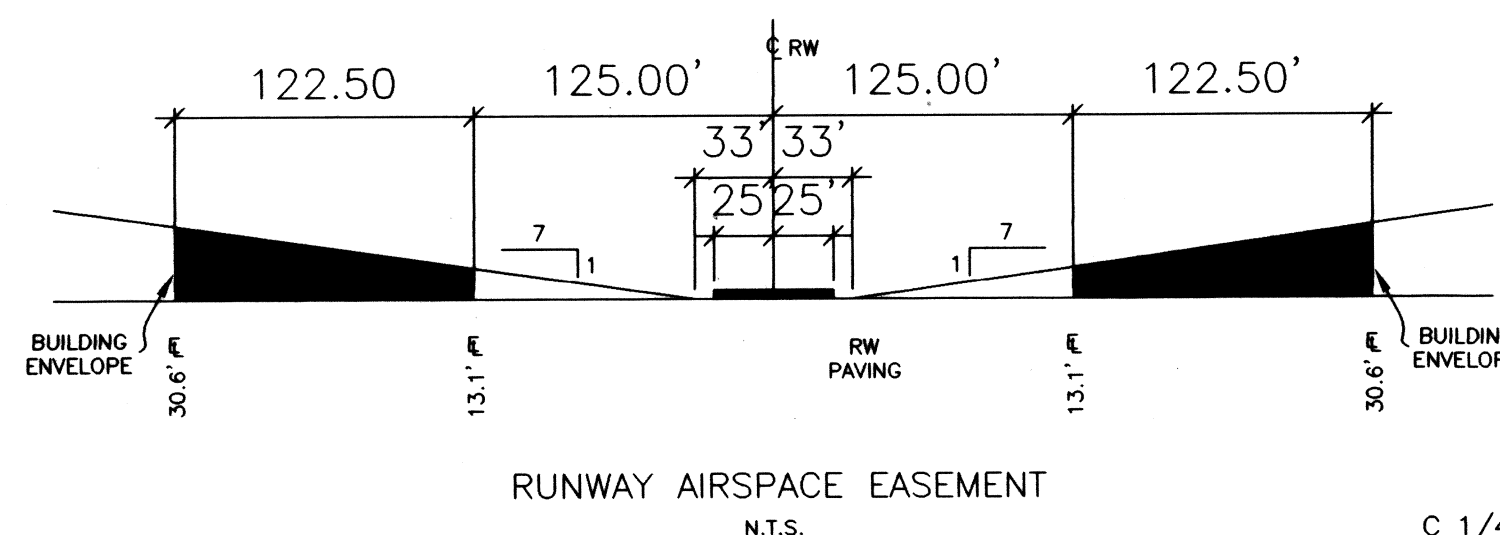
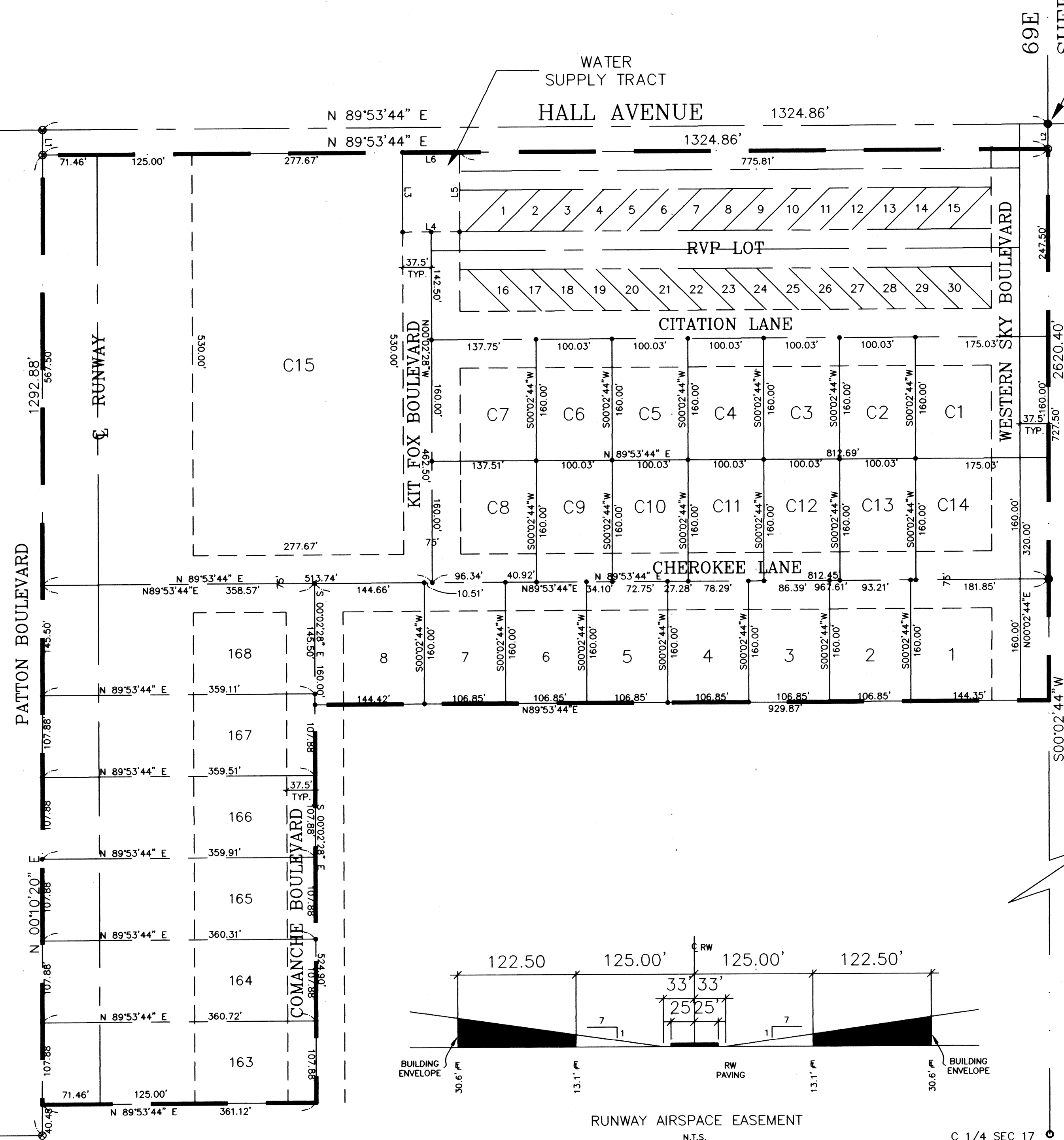
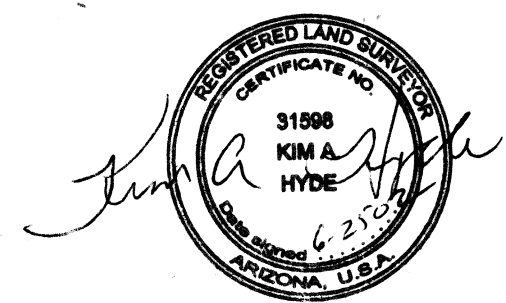
- ⊗ SET 1/2" REBAR WITH YELLOW PLASTIC CAP MARKED "TIERRA RLS 31598"
  - SET 1/2" REBAR WITH 2" ALUMINUM CAP MARKED "TIERRA SURVEY 7 MAPPING RLS 31598"
  - ⊙ FOUND 3" BRASS CAP IN CONCRETE LS 17353
  - FOUND 2" PIPE, NO LS CAP OR TAG
  - △ FOUND MARKED STONE
  - LOT CORNERS
  - - - EASEMENT LINE FOR RUNWAYS & TAXIWAYS
  - SUBDIVISION BOUNDARY
- ALL LOT CORNERS TO BE MONUMENTED WITH 1/2" REBAR WITH BRASS TAG RLS 31598



GRAPHIC SCALE



( IN FEET )  
1 inch = 100 ft.



LINE	LENGTH	BEARING
L1	33.00	S00°02'16" E
L2	33.00	S00°02'44" W
L3	105.00	S00°02'28" E
L4	75.00	S89°53'44" W
L5	105.00	S00°02'28" E
L6	75.00	S89°53'44" W

LOT	GROSS	NET
1	23,077 SF	13,089 SF
2	17,096 SF	13,089 SF
3	17,096 SF	13,089 SF
4	17,096 SF	13,089 SF
5	17,096 SF	13,089 SF
6	17,096 SF	13,089 SF
7	17,096 SF	13,089 SF
8	23,126 SF	13,109 SF
C1	28,004 SF	12,254 SF
C2	16,004 SF	12,254 SF
C3	16,004 SF	12,254 SF
C4	16,004 SF	12,254 SF
C5	16,004 SF	12,254 SF
C6	16,004 SF	12,254 SF
C7	22,020 SF	12,262 SF
C8	21,981 SF	12,239 SF
C9	16,004 SF	12,254 SF
C10	16,004 SF	12,254 SF
C11	16,004 SF	12,254 SF
C12	16,004 SF	12,254 SF
C13	16,004 SF	12,254 SF
C14	28,004 SF	12,254 SF
C15	287,008 SF	287,008 SF
163	38,936 SF	13,215 SF
164	38,892 SF	13,215 SF
165	38,849 SF	13,215 SF
166	38,826 SF	13,215 SF
167	38,762 SF	13,215 SF
168	52,211 SF	13,230 SF

WESTERN SKY AIRPARK

THE HARCUIVAR COMPANY

P.O. BOX 70  
450 SOUTH BUCKEYE ROAD  
SALOME, AZ. 85348  
(928) 859-3647  
FAX (928) 859-3145

REVISIONS	DATE

FINAL PLAT

SHEET  
2 OF 2